

Battery Nutrunner DA2

Torque range from 130 to 4 800 Nm



The new battery nutrunner **DA2** Entirely in a class of its own



We have clearly redefined mobile bolting to new levels. With the new DA2 battery tool Plarad is introducing to the market place a successor to the previously brilliant predecessor tool the DA1. A decisive step forward has been achieved with the newest gearbox technology which enables simpler handling, reduced weight and size. Mobile cordless bolting is now safer due to the additional automatic locking of the motor and gearbox. Versions of the tool are available up to a maximum output of 4 800 Nm. Optional Diagnostic Setting Software with power step lock and tool diagnostics enables the tool to be optimally set up for your specific bolting application.

The Advantages:

- Optimised handling
- Even lighter and compacter than its predecessor
- Automatic locking of gearbox and motor
- Integrated free turning of motor
- Active two step battery charge indicator
- 6 sizes up to a maximum of 4 800 Nm

- Fulfils the requirements and conditions of EN 1090 for structural steel.
- Optional: Diagnostic Setting Software (DSS) with step lock and tool diagnostics
- Scope of delivery: includes qty. 2 – 5 amp batteries, charger, LED battery torch and a robust professional tool case.



At a glance

The battery nutrunner DA2 has a newly developed gearbox; it has been equipped with additional improved features in comparison to the predecessor DA1.



Capacity of the battery pack

Type	Number of tightenings*	Size of bolt	Torque (Nm)
DA2-05	680	M 24x95	420
DA2-10	350	M 27x95	670
DA2-20	200	M 27x95	1400
DA2-30	100	M 36x95	2 100
DA2-36	95	M 36x95	2 300
DA2-48	80	M 52x95	3 600

* Please note: The amount of bolt tightening's have been achieved via testing; the actual amount achievable will be proportional to the bolted joint being already pre-tightened or loose and the actual charge of the battery. Values have been achieved with a fully charged battery.



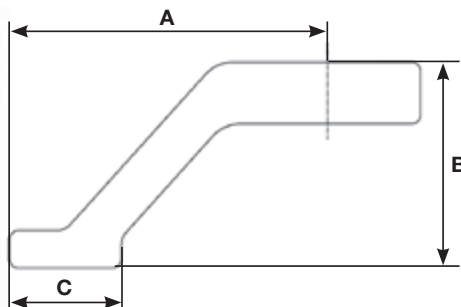
Models

Type	Torque range (Nm)	RPM G1	RPM G2	RPM G3	RPM G4	A (mm)	B (mm)	Ø C (mm)	Ø D (mm)	E (mm)	F (mm)	■ = Drive	Weight ² (kg)
DA2-05	130 - 550	8,4	16,6	37,0	71,6 ¹	365	245	68,5	72	144,5	60,5	¾"	5,35
DA2-10	180 - 1 000	5,3	10,8	24,5	48,0 ¹	365	245	68,5	72	144,5	60,5	¾"	5,35
DA2-20	220 - 2 000	3,0	5,6	12,7	24,6	405	245	80	72	140	61,5	1"	6,85
DA2-30	330 - 3 000	2,3	4,6	10,3	20,9	405	245	80	72	140	61,5	1"	6,85
DA2-36	380 - 3 600	1,8	3,3	7,8	15,3	405	245	80	72	140	61,5	1"	6,85
DA2-48	500 - 4 800	1,4	2,9	6,4	12,9	437	245	86	72	168	83,5	1½"	8,50

¹ Attention – please observe: The 4th gear (highest speed gear) is not suited for controlled torque tightening.

² Weight without reaction arm and incl. battery back.

Standard reaction arm



Type	A (mm)	B (mm)	C (mm)	Weight (kg)
DA2-05	150	100	90	1,5
DA2-10	150	100	90	1,5
DA2-20	150	100	90	1,85
DA2-30	190	110	90	2,4
DA2-36	190	110	90	2,4
DA2-48	210	130	90	3,25

Wide range of accessories

Various accessories (e.g.: inserts, power inverter, weldable rings, sockets and reaction arms) are available in standard and also in bespoke customer designs.



Optional DSS software

With the DSS setting software the operator can lock individual power steps, which enables tightening at a defined torque. Further the diagnostic information can be used for the preventative maintenance of the tool.



... a successful connection!

Maschinenfabrik Wagner GmbH & Co. KG
Birrenbachshöhe | 53804 Much | Germany

Tel. national: (02245) 62-0
Fax national: (02245) 62-66
Phone international: +49 (0)2245 62-10
Fax international: +49 (0)2245 62-22

info@plarad.de | www.plarad.de